



## PRODUCT GUIDE



# CONTENTS



●  
**01**

Structural Additions &  
Options

●  
**11**

Fireplace Options

●  
**15**

Window Options

●  
**19**

Plumbing Options

●  
**27**

Electric Options

●  
**29**

Exterior Trim Options

●  
**31**

Exterior Door Options

●  
**35**

Siding & Shingle  
Options

●  
**37**

Cabinet Styles

●  
**41**

Specialty Cabinet &  
Range Hood Options

●  
**45**

Ceramic Tile Options

●  
**47**

Countertop Options

●  
**51**

Desk & Island Options

●  
**57**

Interior Door and Trim  
Options

●  
**59**

Flooring Options

●  
**63**

Interior Finish Options

●  
**65**

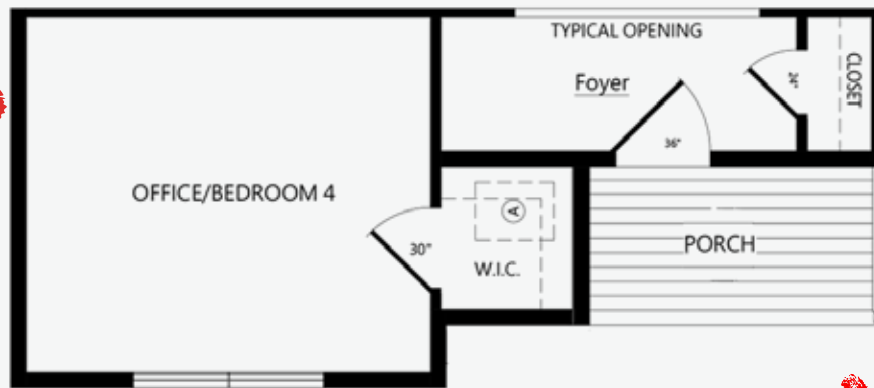
Appliance Options





## **STRUCTURAL ADDITIONS & OPTIONS**





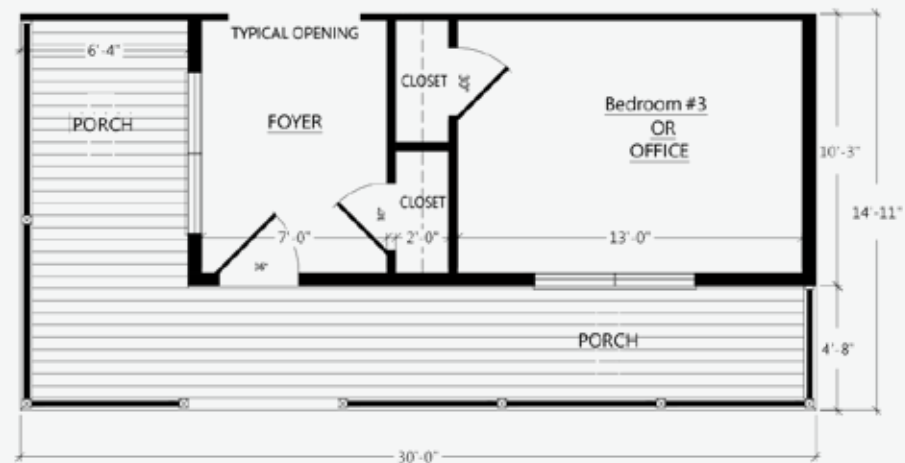
## ADD A THIRD BOX CONFIGURATION

There are many customizations that can be added to the design of our homes. With your builder, adding more square footage, garages, and porches on site is always an option. All of these are popular ideas when building a home and we have designed modules, or boxes, to specifically tackle several of these at once. These modules can be added to many of our floor plans and with this one addition, space for an extra bedroom, office, or even workout room can be added. Along with extra interior space, front porch additions can be added for a dramatic change in curb appeal as well as adding an outdoor living space.

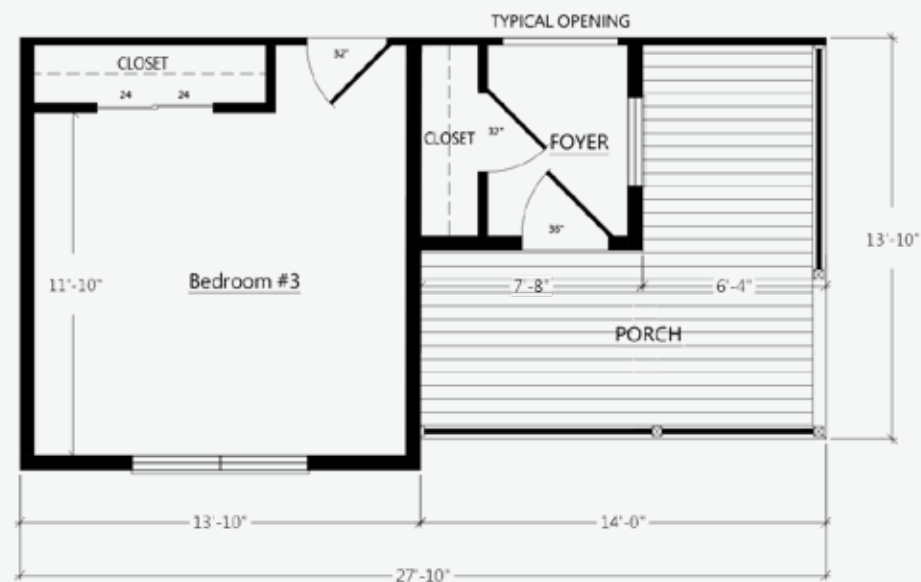




**PORCH UNIT A: OP2008R**



**PORCH UNIT B: OP2009R**



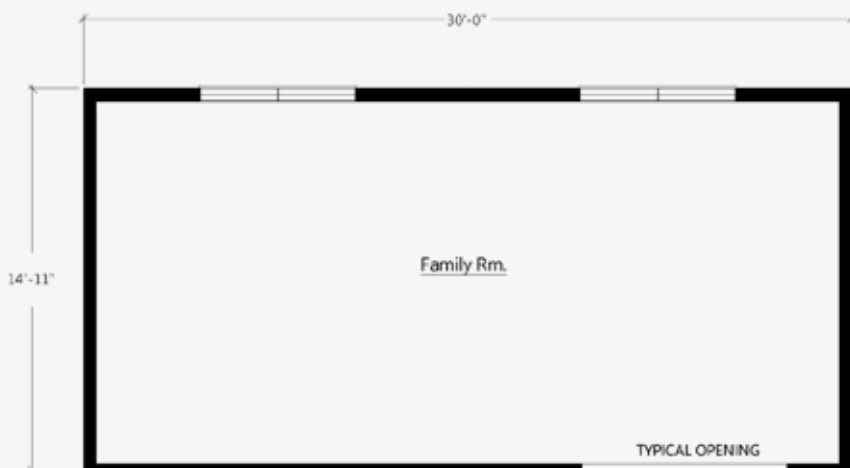
**PORCH UNIT C: OP2010R**





**BED BATH UNIT A: OP2003R**

**BED BATH UNIT B: OP2004R**



**FAMILY ROOM**

26ft: **OP2005R**

28ft: **OP2006R**

30ft: **OP2007R**

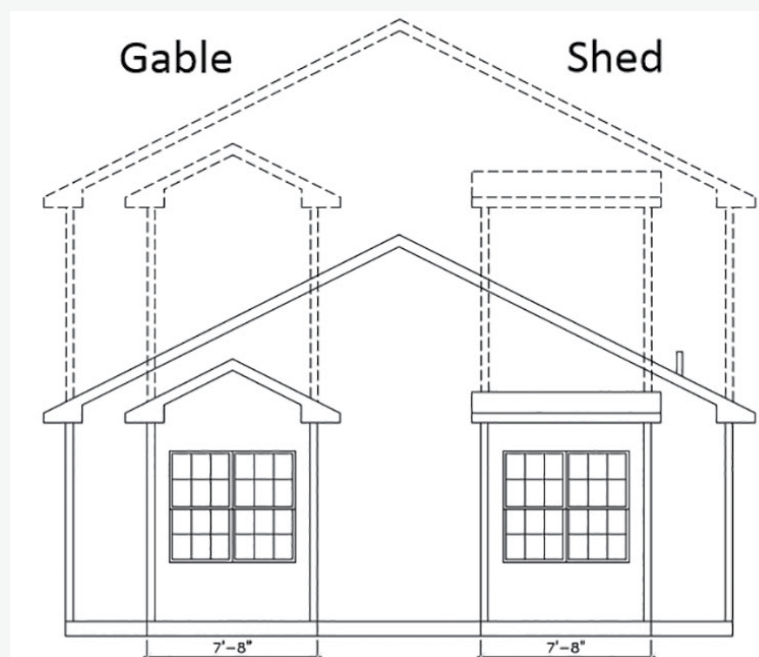


We have designed modules specific to getting more bedrooms and bathrooms in a home. These are especially appealing when added to one of our two story floor plans. Many people have used the bedroom addition modules for adding a main floor master suite or an in-law suite. Finally, we have a living room module that can be added to the side or back of almost any of our designs for additional living/family room. All of these additional boxes will enhance the dimension to a home creating a stunning exterior.



## WHAT IS A ROOF RETURN?

Roof returns are an option on some of our gables and bump outs, a familiar term for these are eyebrows. The shingled line of the roof shown on the left is a good example. A roof return can be used to add decoration to a gable or as a break between a change in exterior façade.



## GABLE VS SHED

We offer two roof profiles on our dormers and bump outs. A gable style roof, where the roof lines come to a peak at the front, can be used to accent a traditional, transitional, or Victorian style home. A shed roof is a low sloped roof that moves in the same directions as the main roof line of a home. Most people use shed roofs to provide a craftsman, transitional, or even modern look.



## DUTCH GABLE BUMP-OUT

Available on 6/12 or 9/12 Ranch or Two Story



No Roof Return Bump-out  
Shown with 8' Sidewalls,  
(2) 3050 Operable Windows,  
and Lineals.

**OP2013AR**

Roof Return Bump-out  
Shown with 8' Sidewalls,  
(2) 3050 Operable Windows,  
and Lineals.

**OP2014AR**



## GABLE BUMP-OUT

Available on 6/12 or 9/12 Ranch or Two Story



Roof Return Bump-out  
Shown with 8' Sidewalls,  
(2) 3050 Operable Windows,  
and Lineals.

**Ranch: OP2016AR**

**Two Story: OP2028R**

No Roof Return Bump-out  
Shown with 8' Sidewalls,  
(2) 3050 Operable Windows,  
and Shutters.

**Ranch: OP2015AR**

**Two Story: OP2024R**



## END WALL BUMP-OUT

Available on 6/12 or 9/12 Ranch or Two Story



10" Gable Bump Out  
Shown with 3050 windows

**Ranch: OP2011AR**

**Two Story: OP2019R**

10" Shed Bump-out  
Shown with 3050 windows

**Ranch: OP2018AR**

**Two Story: OP2020R**



## TWO STORY GABLE BUMP-OUT

Available on 6/12 or 9/12 Two Story



Square Window Bump-out with (2) 3050  
Windows and Shutters

**OP2024R**

## RECESSED ENTRY



Recessed entry with stone or siding to  
bottom of door.

Stone: **OP2045AR**

Siding: **OP2044AR**

## GABLE DORMERS



6' 1" Gable Dormer with 3050 operable or fixed window  
**OP2033R**  
Available 9/12 or 12/12



11' Wide Gable Dormer with (2) 3050 fixed or operable Windows  
**OP2031R**  
Available 12/12

## SHED DORMERS

Available 9/12 or 12/12



6' 1" Shed Dormer with 2030 operable or fixed Windows  
**OP2035R**

11' Wide Shed Dormer with (4) 2030 fixed or operable Windows  
**OP2034R**



## 8' COVERED PORCH

Available in 6/12, 9/12 Ranch Only

Full width porch or half width available.  
Porches can only be built on gable ends.

**OP2002R**





# WHY YOU SHOULD ADD DORMERS

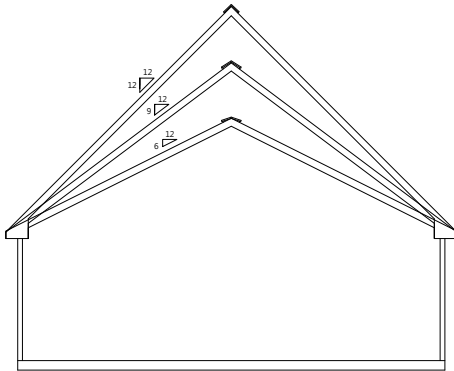


Adding one or more dormers to a roof's structure can turn a rather bland roofline into one with architectural interest and curb appeal. Not only do dormers improve the aesthetics of a home, but this upgrade will also make a home more appealing to buyers. When added to a home, dormers provide much-needed natural light and another view of the outdoors. Adding a large dormer will increase the usable space of a room. They are perfect spots for a reading nook, small office space or a kids' play area.





# BENEFITS OF A HIGHER ROOF PITCH



## STARTING WITH 6/12

All of our 2 box standard ranch homes begin as a 6/12 roof pitch. Upgrade to a 9/12 or a 12/12 roof pitch to take advantage of exterior options such as a higher roof pitch and the ability to add dormers.

## ATTIC SPACE & LIVING SPACE

A higher roof pitch encourages the development of larger attic spaces that are terrific for seasonal or long-term storage. The best part? This storage room often has very minimal installation expenses, as the space is already there. Depending on the pitch, there may even be enough space to convert this area into a functional living space. Many higher pitched roofs have windows installed for added natural light in the attic area.

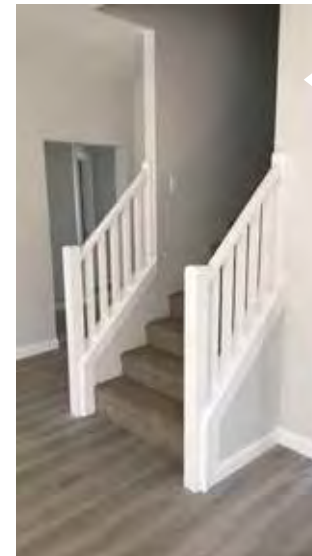
## EXTERIOR APPEAL

Many people adore homes with a higher roof pitch because they offer more visibility to a roof. A roof with a low pitch is usually not visible from ground level. A higher pitch can play a significant role in adding curb appeal to your home. These roofs make a home look more ornate and prominent from the outside. They also allow for the addition of decorative caps, inventive designs, and gables to your building. Higher roof pitches can turn a simple architectural style into a more visually complex one with just a few finishing touches.



Non Habitable 9/12 with 3/4 deck and 2x6 attic endwalls with R25 insulation under floor. (habitable option available)

Habitable 12/12 with 3/4 deck and 2x6 endwalls. R30 insulation under floor



Stairway Rail System  
Handrail is not provided by RHI.  
**OP30033R**



**UPSTAIRS 12/12 FINISHED ON SITE**

## 9/12 CATHEDRAL



9/12 Cathedral shown with (2) 3/0 x 3/0 fixed windows & (1) 3/0 x 6/0 fixed window.

Also available with (2) optional patio doors.

### SILVERLINE

26 ft Wide: [OP3000R](#)

28 ft Wide: [OP3001R](#)

30 ft Wide: [OP3002R](#)

### ANDERSEN

26 ft Wide: [OP3075R](#)

28 ft Wide: [OP3076R](#)

30 ft Wide: [OP3077R](#)

## 12/12 LOFTED CAPE



12/12 Lofted Cape shown with (2) 3/0 x 3/0 fixed windows & (1) 6/0 x 6/0 fixed window.

Also available with (2) optional patio doors.

### SILVERLINE

26 ft Wide: [OP3025R](#)

28 ft Wide: [OP3028R](#)

30 ft Wide: [OP3031R](#)

### ANDERSEN

26 ft Wide: [OP3078R](#)

28 ft Wide: [OP3079R](#)

30 ft Wide: [OP3080R](#)

## LOFTED 9/12, FINISHED ON SITE

All cathedral and loft options have a similar interior to below



## 12/12 LOFTED CAPE



12/12 Lofted Cape shown with (2) fixed trapezoid windows & (1) fixed picture window. Also available with (2) optional patio doors.

### SILVERLINE

26 ft Wide: [OP3027R](#)

28 ft Wide: [OP3030R](#)

12/12 Lofted Cape shown with (2) fixed trapezoid windows & (1) fixed twin picture window. Also available with (2) optional patio doors.

### SILVERLINE

30 ft Wide: [OP3032R](#)

### ANDERSEN

26 ft Wide: [OP3026R](#)

28 ft Wide: [OP3029R](#)

### ANDERSEN

30 ft Wide: [OP3033R](#)





**FIREPLACE OPTIONS**



# CUSTOMIZE YOUR FIREPLACE

## STONE COLOR & STYLE



**BUCKS CREEK**



**CHARLESTON**



**GALVESTON**



**HAMPTON GRAY**



**GRAPHITE**



**PRICE**

## FARMHOUSE MANTLE

Wrap around mantle, stain matches trim package

\*Shiplap not available through RHI

[OP4024R](#)



## 60 INCH. BEAM MANTLES

Mantles constructed out of Maple

[OP4023R](#)



**Farmstead**

**Weathered**



## FIREPLACE A



**Fireplace A** Stone front corner fireplace. Shown with Charleston Stone & Traditional Mantle

Ranch Gas: **OP4001AR** Wood: **OP4000AR**

Cape Gas: **OP4002R** Wood: **OP4003R**

## FIREPLACE C



**Fireplace C** Stone front flat fireplace. Shown with Hampton Gray Stone & Traditional Mantle

Ranch Gas: **OP4006AR** Wood: **OP4007AR** Cape Gas: **OP4004R** Wood: **OP4005R**

## FIREPLACE F



**Fireplace F** Rave fireplace. Includes: Modern Fireplace with Black Trim

Ranch Gas: **OP4013AR**

Cape Gas: **OP4012R**

## FIREPLACE E



**Fireplace E** Stone front half wall fireplace. Shown with Graphite Stone & Traditional Mantle  
 Ranch Gas: **OP4010AR** Wood: **OP4011AR** Cape Gas: **OP4008R** Wood: **OP4009R**

## FIREPLACE H



**Fireplace H** Stone front fireplace with Farmhouse Mantle. Shown with Bucks Creek stone.  
 Ranch Gas: **OP4019AR** Wood: **OP4020AR**  
 Cape Gas: **OP4018R** Wood: **OP4021R**

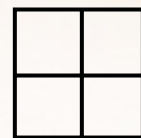
## FIREPLACE G



**Fireplace G** Farmhouse fireplace. Shown with Bucks Creek Stone front Fireplace. Shelving with raised hearth and mantle, windows, (4) can lights and (2) eyeball lights. Total Length: 17' 4"  
 Ranch Gas: **OP4017R**  
 Wood: **OP4015R**  
 Cape Gas: **OP4016R**  
 Wood: **OP4014R**

Note: \*Media prep outlet is not included



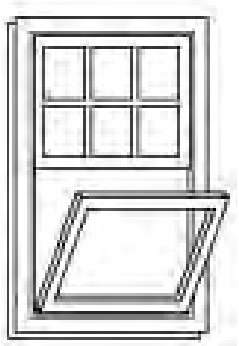


**WINDOW OPTIONS**

# KNOW YOUR WINDOWS

## SINGLE HUNG

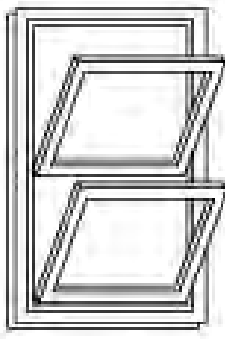
Single-Hung windows allow ventilation through a single operable lower sash.



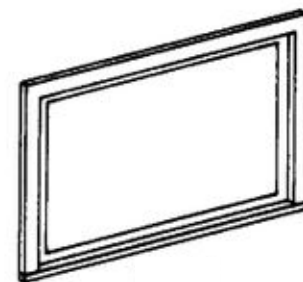
\*View from inside

## DOUBLE HUNG

Double-Hung windows have two operating sash that move up and down allowing for ventilation on the top, bottom or both.

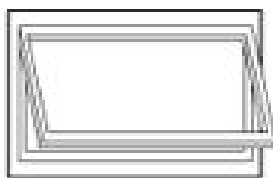


\*View from inside



## TRANSOM WINDOW

A window above a door that is usually installed to a horizontal crosspiece over the door.



\*View from outside

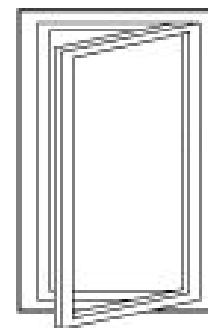
## AWNING WINDOW

Awning windows are hinged on the top and open outward from the bottom, allowing for ventilation and protection from the rain. Often placed higher on walls for privacy or in combination with large stationary windows for a better view.

## CASEMENT WINDOW

Casement windows are hinged on the side and crank open outward to the left or right allowing for full top to bottom ventilation.

Standard above kitchen sinks, casement windows give you the flexibility to group them in stunning combinations.



\*View from outside



## ADVANTAGES OF SILVERLINE

The Silverline Series offers a great vinyl window option that performs just as well as it looks.

- Low Maintenance Vinyl Interior and Exterior
- Standard with screen & colonial grids
- Casement Window in Kitchen, single hung
- 6' 0" Also available with 9' Sidewall Option
- Available in Double Hung
- Transoms also available
- Energy Star Rated
- Limited Lifetime Warranty

## SOME POPULAR SILVERLINE OPTIONS

Vinyl WDO 3050: [OP9038AR](#)

Vinyl WDO 3060: [OP9041R](#)

Vinyl WDO 2050 additional: [OP9034AR](#)

Vinyl WDO 2030 tempered glass additional: [OP9032AR](#)

Vinyl WDO 2630 tempered glass additional: [OP9037AR](#)

Vinyl WDO 4050 w/two flanking windows: [OP9045R](#)

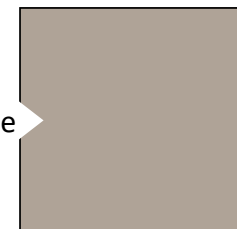
Vinyl WDO Transom 12 inch: [OP9054AR](#)

Vinyl WDO Awning 3015: [OP9046R](#)

Vinyl WDO 2430 Casement additional: [OP9036AR](#)



White



Sandtone

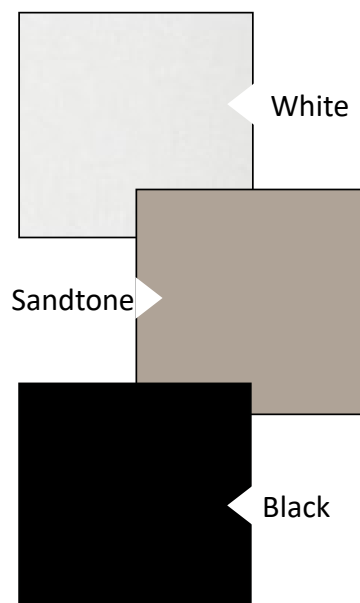




## ADVANTAGES OF ANDERSEN

The 400 Series brings you the best overall blend of performance and style to satisfy just about any window or patio door need.

- Interior Wood Painted
- Wood Frame with Exterior Vinyl Clad
- Wood Sashes with Flexacron Finished Exterior
- Standard with screen and colonial grids
- Standard Double Hung with Casement in Kitchen
- Energy Star Rated
- Limited Warranty



## SOME POPULAR ANDERSEN OPTIONS

Andersen 400 WDO TW210410: [OP9017R](#)

Andersen 400 WDO TW210510: [OP9020R](#)

Andersen 400 WDO TW20210: [OP9014R](#)

Andersen 400 WDO TW24120: [OP9021R](#)

Andersen 400 WDO Picture 310410 w/ 2 flanking: [OP9011R](#)

Andersen 400 WDO Transom: [OP9013R](#)

Andersen 400 WDO AR31 Awning 3'x17": [OP9009R](#)

Andersen 400 WDO CW13: [OP9010R](#)



**PLUMBING OPTIONS**

# BEST SELLING SHOWERS!

## SHOWER OH!



Acrylic paneled shower with cultured marble print. 5'x5' shower pan with rainfall showerhead. Standard with transom window and two shower heads.

No shampoo niche

IPO 48" Shower and drop in tub **OP6045R**

(In Ceramic **OP6047R**)

IPO 48" Shower **OP6046R**

(In Ceramic **OP6048R**)

## SERENITY SHOWERS



### Shower N3

Serenity ceramic walk in shower, 1/2 wall, and glass, standard with block window, can light, rainfall showerhead, and Delta components

**OP6043R**

### Shower N4

Serenity ceramic walk in shower with full bench, 1/2 wall, and glass, standard with block window, can light, rainfall showerhead, and Delta components

**OP6044R**



## STANDARD SINKS



Standard stainless steel kitchen sink 8" depth

Standard China Lav Bowl



## OPTIONAL SINKS



Pedestal Sink  
**OP6057AR**



Washtub installed in cabinet  
**OP6059AR**



Black Kitchen Sink  
-Crafted from Nickel Quartz  
-Stain, impact, heat, and scratch resistant  
-Sound-deadening material  
-Hygiene protection  
-9" depth  
**OP6051AR**

Kohler Vault Stainless Steel  
Single Bowl topmount, 10" depth  
**OP6055AR**



Double Lavs  
**OP6053AR**

# CHOOSE YOUR FINISHES

## STANDARD FAUCETS



Bathroom Faucet



Single Handle Kitchen Faucet  
with Spray Handle



see what Delta can do™

All Faucets are standard in Polished Chrome but can be upgraded to either Brushed Nickel or Oil Rubbed Bronze.

[OP6018AR](#)



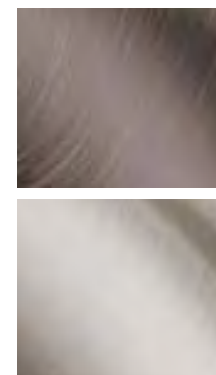
Two Handle  
Laundry Faucet



Shower Trim



Tub/Shower Trim



## STAND ALONE TUB FAU-



Stand Alone Tub Faucets are standard in Polished Chrome but can be upgraded to either Brushed Nickel or Oil Rubbed Bronze.

[OP6018AR](#)



## FAUCETS UPGRADES



Single Handle  
Bar Faucet

[OP6050AR](#)

Color Options:



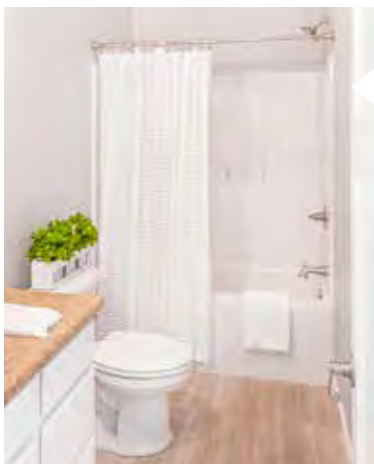
Single Handle  
Pull Down Kitchen Faucet

[OP6019AR](#)

Color Options:



# SHOWER OPTIONS



**Shower A**  
60" Tub/ Shower



**Shower C**  
48" shower with sliding enclosure in place of 48" fiberglass with sliding enclosure.  
**OP6030AR**  
Available with ceramic on walls. No seat  
**OP6029R**



**Shower D**  
60" shower with enclosure in place of tub/shower.  
**OP6032AR**  
Available with ceramic on walls no seat.  
**OP6031R**



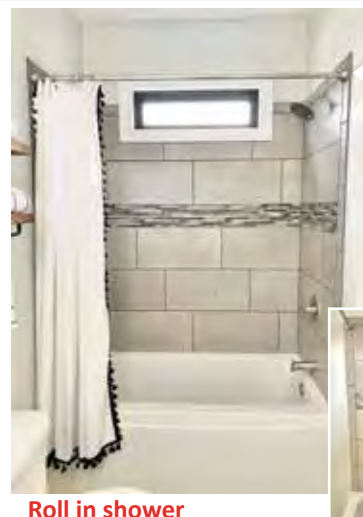
**Shower E**  
60x43 bench shower in place of standard tub/shower with enclosure.  
**OP6036AR**



**60in Chrome Barn Shower Door**

- Contemporary barn door w/ a minimalist design
- Slim stainless header with 18 in. handle
- Chrome finish
- 78 3/4" high clear glass panel
- (Available with Shower OH! and 60in. Ceramic Only)

**OP6033R**



**Roll in shower**  
50x50 in place of standard w/(1) grab bar  
**OP6049AR**  
Fold down seat in roll in shower **OP6038AR**  
Grab bar for tub/shower (1) **OP6039AR**  
Hand held shower head(shower head only)  
**OP6040AR**



**Tub/ Shower G**  
Fiberglass tub with ceramic tile on wall. Ivory, Calacatta, or Gray with accent. Includes shampoo niche.  
**OP6065R**

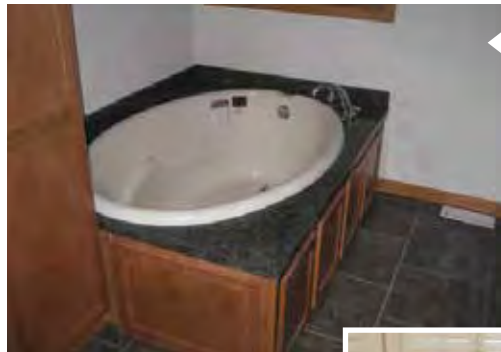




# TUB OPTIONS



**Tub M**  
Ceramic backsplash for corner tub w/ (1) row of accent tile  
**OP6064R**



**Tub G**  
Drop in tub with laminate top

**Tub L**  
Ceramic top on drop in tub, with 45" of backsplash, one row of accent tile  
**OP6063R**



**Tub H**  
72" tub in place of standard  
**OP6067AR**



**Tub I**  
Corner Fit Tub



**Tub B**  
Garden/Tub shower in place of standard  
**OP6062AR**



**Free Standing Tub**  
Freestanding fiberglass tub in place of standard  
**OP6077AR**

## SHOWER TILE OPTIONS

- OP6069R** - Ceramic tile 12x24 with Silverado Grout
- OP6047R** - Shower OH! with Ceramic Tile IPO 48in. Shower and drop in Tub
- OP6048R** - Shower OH! with Ceramic Tile IPO 48in. Shower/Tub

# SERENITY SHOWERS

## N1 & N3



### Shower N1

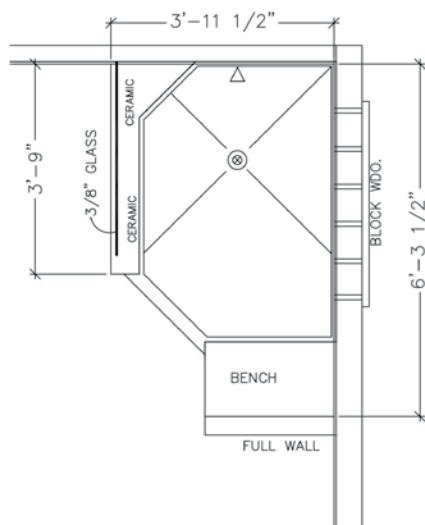
Serenity ceramic walk in shower standard with block window (not shown), can light, rainfall shower-head, and Delta components

**OP6041R**

### Shower N3

Serenity ceramic walk in shower, 1/2 wall, and glass, standard with block window, can light, rainfall shower-head, and Delta components

**OP6043R**

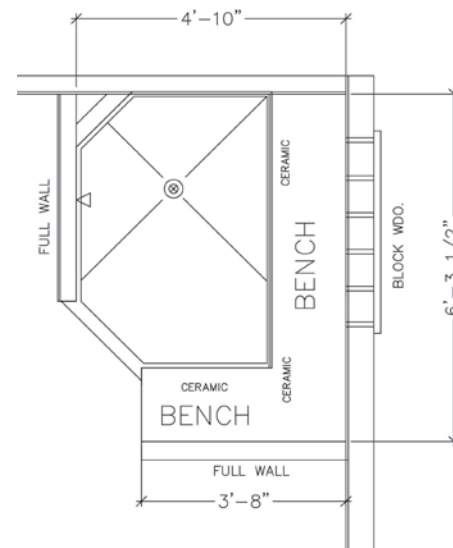


## N2 & N4

### Shower N2

Serenity ceramic walk in shower with full bench, standard with block window, can light, rainfall shower-head, and Delta components

**OP6042R**



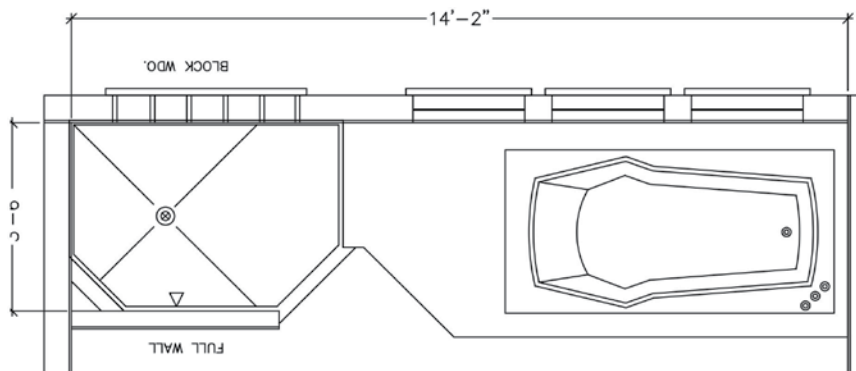
### Shower N4

Serenity ceramic walk in shower with full bench, 1/2 wall, and glass, standard with block window, can light, rainfall showerhead, and Delta components

**OP6044R**

# TRANQUILITY BATHS

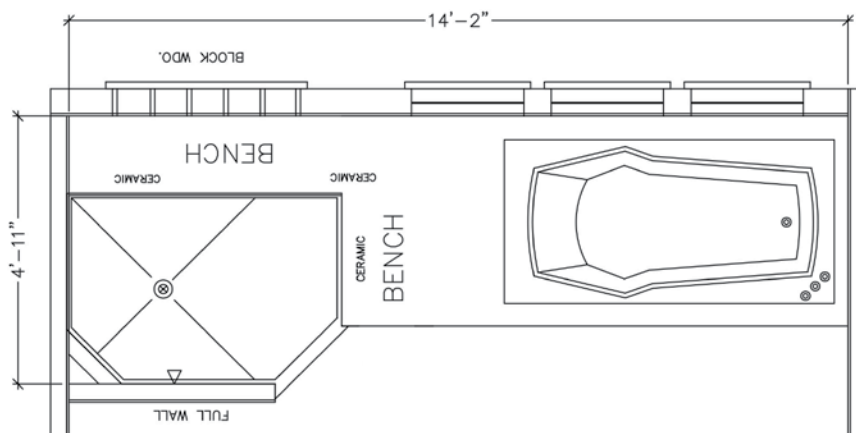
## T1 & T2



### Shower T1

Ceramic walk in shower with 72" tub, may change plan, total length 14' 2". Includes windows & shutters shown, can light, rainfall shower head and Delta components

**OP6021R**

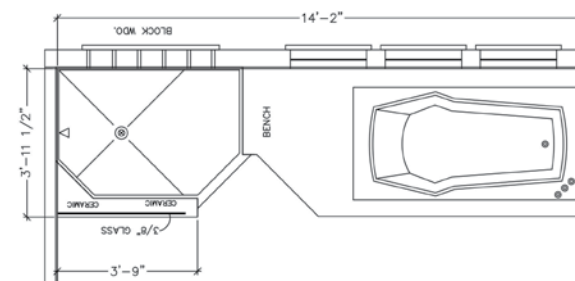


### Shower T2

Ceramic walk in shower with 72" tub, may change plan, total length 14' 2". Includes full bench, windows & shutters shown, can light, rainfall shower head, and Delta components

**OP6022R**

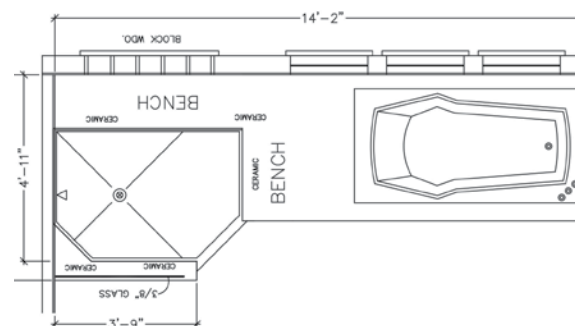
## T3 & T4



### Shower T3

Ceramic walk in shower with 72" tub, may change plan, total length 14' 2". Includes 1/2 wall, and glass, windows & shutters shown, can light, rainfall shower head and Delta components

**OP6023R**



### Shower T4

Ceramic walk in shower with 72" tub, may change plan, total length 14' 2". Includes full bench, 1/2 wall with glass, windows and shutters shown, can light, and rainfall shower head Delta components.

**OP6024R**





**ELECTRIC OPTIONS**

## STANDARD BRUSHED NICKEL



Walk In Closet



Bedroom



Dining Room



Standard Morning Room/Open Foyer  
Optional Foyer [OP7028AR](#)



Optional Pendant  
[OP7034AR](#)

## RUSTIC BRONZE OPTION



Walk In Closet



Bedroom



Dining Room



Standard Morning Room/Open Foyer  
Optional Foyer [OP7028AR](#)



Optional Pendant  
[OP7034AR](#)

## MISC. OPTIONS



USB/Power in place of standard  
[OP7013AR](#)  
USB/Power outlet additional  
[OP7012AR](#)

Standard Exterior Coach







 **EXTERIOR TRIM OPTIONS**



# SHUTTERS

Raised Panel (Standard)/Board & Batten (Upgrade)



WINSTONE



DARK NAVY



WHITE



GRAY



BLACK



PEBBLESTONE



PEPPERCORN



SPANISH MOSS



BLACKWATCH  
GREEN



RED

CLAY

EXT Trim-Sandtone/Clay trim package Ranch [OP11008AR](#) Two story [OP11005R](#) Cape Cod [OP11007R](#)  
EXT Trim-Ranch Trim Package White: Window, Door, Drip Edge, Facia, and Soffit [OP11006AR](#)  
Board and Batten Shutters replace standard Ranch/Cape [OP11003AR](#) Two Story [OP11004R](#)



5 1/2" trim (shown) replace shutters  
white or clay  
Ranch/Cape [OP11000AR](#)  
Two Story [OP11002R](#)





## EXTERIOR DOOR OPTIONS

## DOOR HANDLE OPTIONS



### Brushed Nickel

Exterior door knob and dead-bolt standard



### Rustic Bronze

Exterior door knob and dead-bolt standard



### Brushed Nickel

Exterior door decorative handle  
**OP8070AR**



### Rustic Bronze

Exterior door decorative handle  
**OP8070AR**

## PATIO DOORS



Therma-Tru 2 panel hinged  
grids and screen  
**OP8063AR**



Vinyl 2 panel sliding with  
screen  
**OP8064AR**



RS130 6068 HPD Therma-Tru  
2 panel hinged with blinds  
and screen  
**OP8065AR**



Andersen Perma Shield 2  
panel gliding with screen. No  
grids. Int/Ext match  
**OP8062AR**



Andersen 2 panel sliding with  
screen. No grids. Ext. painted  
white.  
**OP8061AR**



# EXTERIOR DOOR OPTIONS

ALL DOORS AVAILABLE IN SMOOTH PAINT OR WOOD GRAIN STAIN



**Door A**

Smooth Painted  
Upgrade Steel 6 Panel  
Fire Rated 20 min.  
Front or 90 min. Rear  
**OP8000AR**



**Door B: Decorative Oval**  
Painted      Wood Grain

**OP8002AR    OP8001AR**

Sidelight:

**OP8020AR    OP8019AR**

Transom:

**OP8037AR    OP8038AR**



**Door C: Full Axis Glass**  
Painted      Wood Grain

**OP8004AR    OP8003AR**

Sidelight:

**OP8022AR    OP8021AR**

Transom:

**OP8039AR    OP8040AR**



**Door D: 3/4 glass, 12 light**  
Painted      Wood Grain

**OP8006AR    OP8005AR**

Sidelight:

**OP8024AR    OP8023AR**

Transom:

**OP8041AR    OP8042AR**



**Door E: 6 Light, Raised Panel**  
Painted      Wood Grain

**OP8008AR    OP8007AR**

Sidelight:

**OP8026AR    OP8025AR**

Transom:

**OP8043AR    OP8044AR**



## PAINT COLORS

112 Alpine

110 Onyx  
OP8080AR

130 Indigo  
OP8081AR

122 Sand

152 Cabernet  
OP8087AR

134 Blue  
OP8083AR

106 Granite  
OP8078AR

132 Wedgewood  
OP8082AR

144 Forrest Green  
OP8086AR

108 Gray  
OP8079AR



**Door F: 9 Light, Exterior Grids**  
Painted      Wood Grain

**OP8010AR**   **OP8009AR**

Sidelight:

**OP8028AR**   **OP8027AR**

Transom:

**OP8045AR**   **OP8046AR**



**Door G: 4 Light**  
Painted      Wood Grain

**OP8012AR**   **OP8011AR**

Sidelight:

**OP8030AR**   **OP8029AR**

Transom:

**OP8047AR**   **OP8048AR**



**Door H: Half Glass**  
Painted      Wood Grain

**OP8014AR**   **OP8013AR**

Sidelight:

**OP8032AR**   **OP8031AR**

Transom:

**OP8049AR**   **OP8050AR**



**Door I: Full Glass with Blinds**  
Painted      Wood Grain

**OP8016AR**   **OP8015AR**

Sidelight:

**OP8034AR**   **OP8033AR**

Transom:

**OP8051AR**   **OP8052AR**



**Door J: Sunburst, External Grids**  
Painted      Wood Grain

**OP8017AR**   **OP8091AR**

Sidelight:

**OP8036AR**   **OP8035AR**

Transom:

**OP8054AR**   **OP8053AR**

## STAIN COLORS

140 Candy Apple  
OP8085AR

138 Teal  
OP8084AR

104 Champagne  
OP8076AR

154 Maroon  
OP8088AR

Bark  
OP8055AR

Driftwood  
OP8057AR

Barley  
OP8056AR

New Earth  
OP8058AR

Raven  
OP8059AR





**SIDING & SHINGLES**



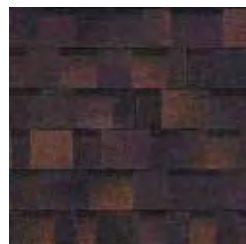
## TRUDEFINITION DURATION SHINGLES



Amber  
OP12033AR



Desert Tan  
OP12035AR



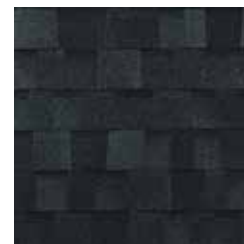
Brownwood  
OP12031AR



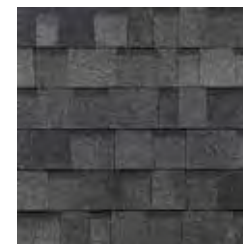
Teak  
OP12043AR



Driftwood  
OP12036AR



Onyx Black  
OP12039AR



Estate Gray  
OP12037AR



Terra Cotta  
OP12044AR



Quarry Gray  
OP12040AR



Sierra Gray  
OP12042AR



Colonial Slate  
OP12045AR



Harbor Blue  
OP12038AR



Chateau Green  
OP12032AR



Shasta White  
OP12041AR



### GROUP A STANDARD SIDING



Gray  
OP12012AR



White  
OP12016AR



Mist  
OP12013AR



Olive  
OP12014AR



Clay  
OP12010AR



Tan  
OP12015AR



Flint  
OP12011AR

### GROUP B SIDING

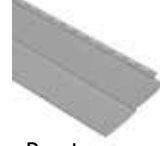
0.42mm



Briarwood  
OP12017AR



Sagebrook  
OP12019AR



Pewter  
OP12018AR



Wedgewood  
OP12020AR

### GROUP C SIDING

0.44mm



Hampton Red  
OP12023AR



Bayou Blue  
OP12021AR



Shadow  
OP12024AR



Brunswick  
OP12022AR

### GROUP D SIDING

0.44mm



Northern Oak  
OP12026AR



Hearthstone Brown  
OP12025AR

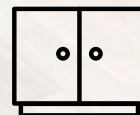
### STYLES



Siding groups  
A-D come in  
traditional lap.



Siding- Vinyl shingle in Gray,  
White, or Tan in place of:  
Standard Siding - **OP12027AR**  
Upgrade Siding - **OP12028AR**



**CABINET STYLES**



## STANDARD CABINET GROUP

Square recessed panel overhead  
and base cabinets-Partial Overlay

Ranch/Cape **OP13002AR**  
Two-Story **OP13000R**



**SPRING VALLEY  
MAPLE BOARDWALK**



**SPRING VALLEY  
MAPLE PECAN**



**SPRING VALLEY  
MAPLE DUSK**

## CABINET CONSTRUCTION



We are America's Cabinetmaker.

**Construction:** 3/4" Solid wood face frames, reinforced and aligned with dowels and adhesive.

**Drawers:** Front is 3/4" thick. Also have WhisperGlide 75# capacity glides. Deluxe drawer option with 5/8" dovetailed construction and full extension undermount glides with soft-action technology available.

**Roll Out Trays:** Base cabinet roll out trays optional

**Overhead Cabinet Shelves:** 3/4" thick fully adjustable overhead shelves

**Hinges:** 6-way adjustable self closing concealed hinges with limited life time warranty

**Warranty:** 10-25 year limited warranty depending on cabinets

## CABINET GROUP A

Square recessed panel overhead  
and base cabinets-Partial Overlay

Ranch/Cape **OP13005AR**  
Two-Story **OP13006R**



**SPRING VALLEY  
HICKORY NATURAL**



**MARLIN MAPLE  
BOARDWALK**



**MARLIN MAPLE  
PECAN**



**MARLIN MAPLE  
DUSK**



Note: Please see sample for true color



## CABINET GROUP B

Ranch/Cape [OP13009AR](#)

Two-Story [OP13010R](#)



**SPRING VALLEY  
MAPLE COTTON**



**SPRING VALLEY  
MAPLE GRAPHITE**



**SPRING VALLEY  
MAPLE NIGHTFALL**



**MARLIN MAPLE  
COTTON**



**MARLIN MAPLE  
GRAPHITE**



**MARLIN MAPLE  
NIGHTFALL**

## DELUXE DRAWER PACKAGE



We are America's Cabinetmaker.

Available for classic line cabinets only in the Kitchen and Utility.

- Thicker core drawers- 5/8" thick drawer core provides a remarkably solid frame
- Dovetail drawer construction-durable and includes the SoftAction+ Tecnology on drawers only for a completely silent and effortless closing movement.
- Full extention drawers-allows the drawer to be completely opened.
- Plywood drawer bottom provides durable support to help resist sagging.

[OP13028AR](#) - Kitchen and Utility

[OP13029AR](#) - Kitchen, Utility and All Baths



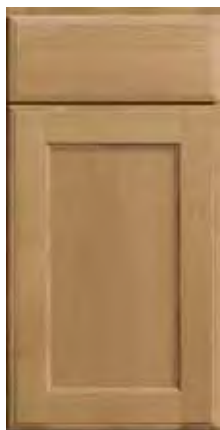
Note: Please see sample for true color

## CABINET GROUP C

Ranch/Cape **OP13019R**

Two-Story **OP13014R**

Square recessed panel overhead  
and base cabinets- Full Overlay



**RALSTON MAPLE  
BOARDWALK**



**RALSTON MAPLE  
PECAN**



**RALSTON MAPLE  
DUSK**



## CABINET GROUP D

Ranch/Cape **OP13036R**

Two-Story **OP13018R**

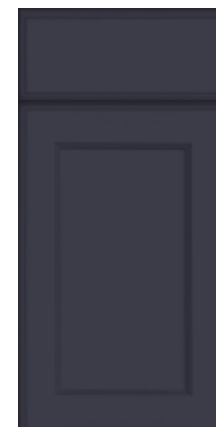
Square recessed panel overhead  
and base cabinets- Full Overlay



**RALSTON  
MAPLE COTTON**



**RALSTON  
MAPLE GRAPHITE**



**RALSTON  
MAPLE NIGHTFALL**

Note: Please see sample for true color



**SPECIALTY CAB/  
RANGE HOOD**



## STAINLESS STEEL RANGE HOOD

OP20004AR



## STAINLESS STEEL WALL MOUNT

Stainless steel wall mount with ceramic back splash vented outside. Optional with extended glass and 36" opening with 30" range hood [OP14015R](#)



## SPECIALTY CABINETS ADDITIONS

[OP14039AR](#) - Vanity storage over commode

[OP7011AR](#) - Under cabinet lighting

[OP14003AR](#) - 18" Additional bank of drawers

[OP13027AR](#) - Base cabinet roll out tray



Cabinet door knobs and drawer pulls, functional cabinets only [OP14008R](#)



Standard bathroom with trimmed mirror, pendant lights, and bank of drawers

## OVERHEAD CABINET OPTIONS



Wall Wine Storage Cabinet  
**OP14043AR**



24" overhead open  
bookshelf with organizer in  
place of overhead 2430  
**OP14018AR**



Glass door on wall  
straight cabinet 15" or 18"  
square to match cabinets  
**OP14033AR**



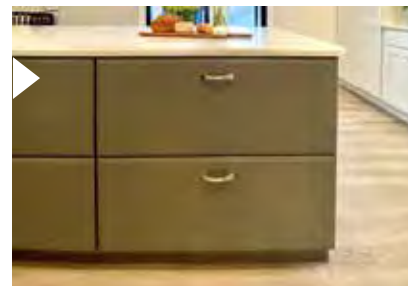
Wall Message Center on end of cabinet  
(36" or 42") **OP14042AR**

## BASE CABINET OPTIONS



Double base waste basket  
top mount  
**OP14028AR**

36" base pots and pans  
2-Drawer in place of  
standard  
**OP14020AR**



36" base pots and pans  
3-Drawer in place of  
standard  
**OP14019AR**



Tilt out sink tray  
**OP14036AR**

9" base pull out pantry in  
place of standard cabinet  
**OP14023AR**



36" Pantry with swing out  
racks in place of 18"  
**OP14000AR**



Double pantry surround  
refrigerator  
**OP14029AR**



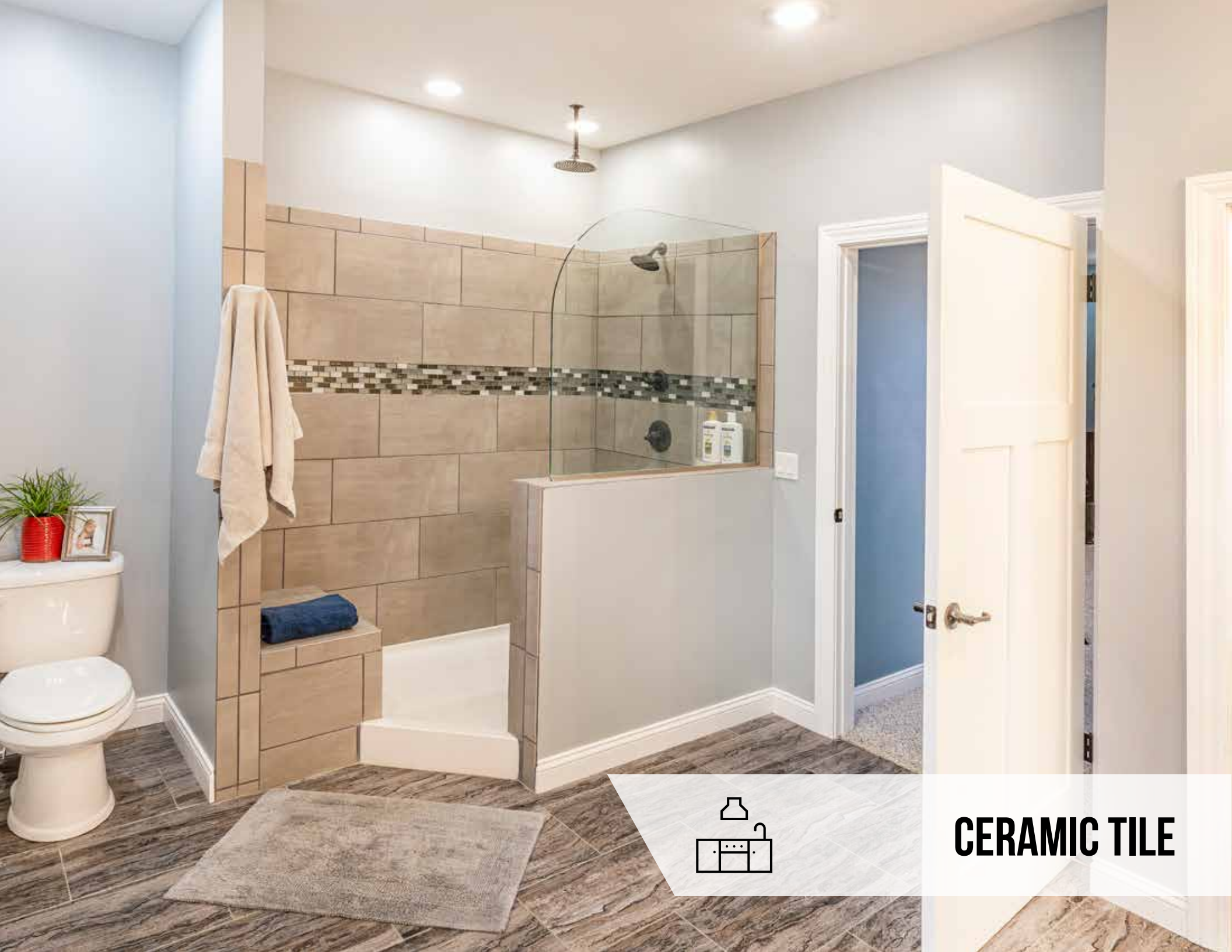
Enclosed refrigerator  
36 x 72/stacked washer/  
dryer. 30/78 opening  
with 24" deep overhead  
cabinet  
**OP14030AR**

Universal wall oven unit in place of base  
and overhead  
**OP14038AR**  
Universal wall oven unit additional cabinet  
**OP14037AR**

33"x90" w/30" Overhead Cabinets  
33"x96" w/42" Overhead Cabinets  
Appliance Opening Width 27"-31"  
Opening Height 23 3/4"-47 1/4"







**CERAMIC TILE**

## CERAMIC TILE COLORS



IVORY 12X24



CALACATTA 12X24



GRAY 12X24

## TILE OPTIONS

### BATHROOM

See Plumbing Options for showers available in ceramic. Only available in Silverado Grout.

### KITCHEN

**OP14015R** - Rangehood - Stainless Steel wall mount with Ceramic Tile, Vented Outside. Choose grout color.

**OP14017R** - Rangehood - Stainless Steel wall mount with Subway Tile, Vented Outside. Choose grout color.

**OP14016R** - Rangehood - Stainless Steel wall mount with Decorative Tile, Vented Outside. Choose grout color.

**OP14010R** - Ceramic tile between backsplash and upper cabinet. Choose grout color.

**OP14012R** - Subway Tile - Installed in a brick pattern. Choose grout color.

**OP14011R** - Ceramic decorative accent tile, between backsplash and upper cabinet.

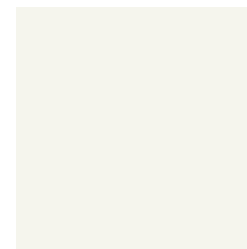
## GROUT COLORS



SILVERADO

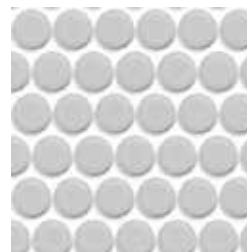


RAVEN



BRIGHT WHITE

## ACCENT TILES



PENNY



MOSAIC

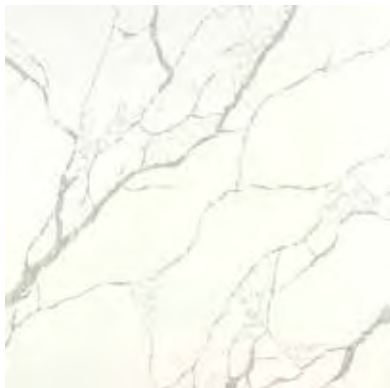




**COUNTERTOPS**



## **TOP QUARTZ COLORS**



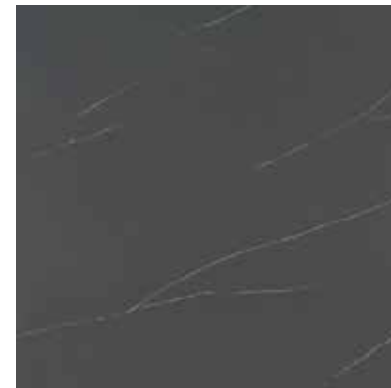
**CALACATTA LAZA**



**ICED GRAY**



**CARARRA MORRO**



**SOAPSTONE METROPOLIS**

## **ADVANTAGES TO UPGRADING TO QUARTZ**

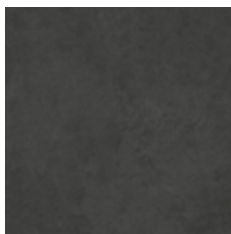
We offer two countertop materials. Laminate countertops are a wood-based counter with a laminated print for a surface. A laminate countertop offers great affordability and has many styles to choose from. We choose to build our homes with a post form, rolled edge laminate top so that there are no seams from the front of your countertop all the way to the backsplash, which prevents damage from water penetrating seams or from physical damage to the top. If you choose to upgrade to a solid surface countertop, we move straight to the hardest top in the industry. Quartz is a manufactured product that has grown in popularity because of its durability, lack of need for major time in upkeep, and beautiful, eye-catching designs.



## STANDARD COUNTERTOP COLORS



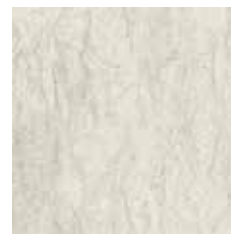
Pebble Piazza  
OP15008AR



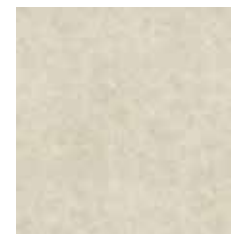
Oiled Soapstone  
OP15007AR



White Juparana  
OP15011AR



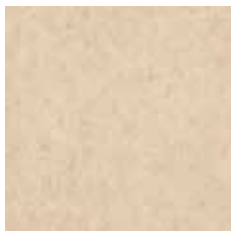
White Cascade  
OP15010AR



Calacatta Oro  
OP15003AR



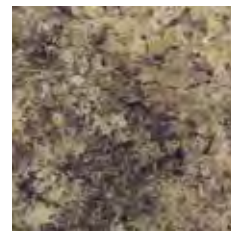
Milano Quartz  
OP15005AR



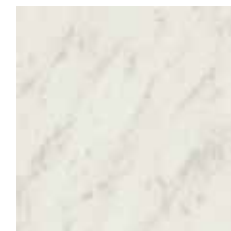
Natural Canvas  
OP15006AR



Butterum Granite  
OP15002AR

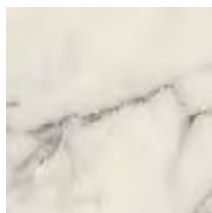


Jamocha Granite  
OP15004AR



White Carrara  
OP15009AR

## UPGRADE COUNTERTOP COLORS



Marmo Bianco  
OP15047AR



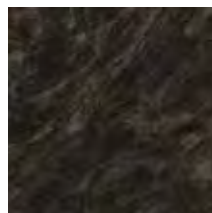
Drama Marble  
OP15048AR



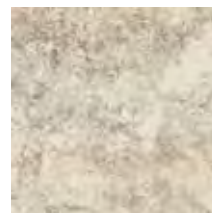
Italian White di Pesco  
OP15044AR



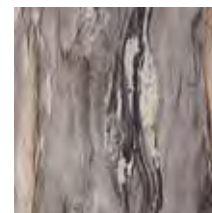
Typhoon Ice  
OP15049AR



Sombra  
OP15050AR



Crema Mascarello  
OP15041AR



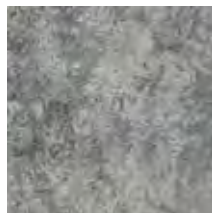
Dolce Vita  
OP15042AR



Calacatta Marble  
OP15036AR



Argento Romano  
OP15038AR



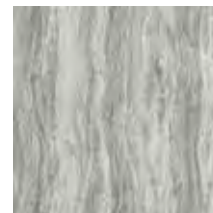
Azul Aran  
OP15039AR



Glacier Quartzite  
OP15046AR



Antique Mascarello  
OP15037AR



Fantasy Marble  
OP15043AR



Cafe Azul  
OP15040AR



Jet Sequoia  
OP15045AR



## QUARTZ COUNTERTOP-GROUP A



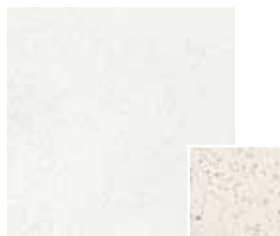
Frosted White  
OP15065R



Bayshore Sand  
OP15070R

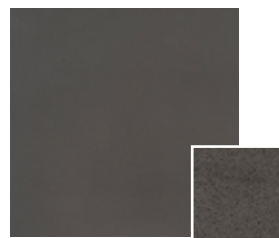


Iced Gray  
OP15064R



Sparkling White  
OP15071R

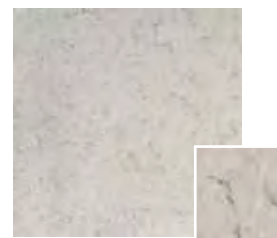
## QUARTZ COUNTERTOP-GROUP B



Manhattan Gray  
OP15079R



Fossil Gray  
OP15075R



Cararra Mist  
OP15077R



Shell White  
OP15078R

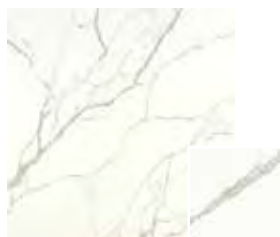


Cararra Morro  
OP15074R

## QUARTZ COUNTERTOP-GROUP C



Calacatta Botanica  
OP15084R



Calacatta Laza  
OP15087R

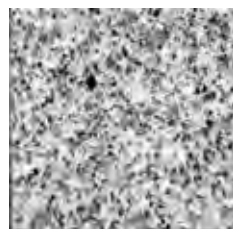


Soapstone Metropolis  
OP15083R

### COUNTERTOP THICKNESS

All quartz groups will be 3cm thick in the Kitchen and 2cm thick in the bathrooms. Vanitease options will be 2cm thick

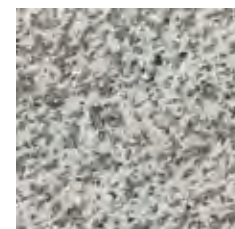
## VANITEASE LAV COUNTERTOP COLORS - BATHROOM ONLY



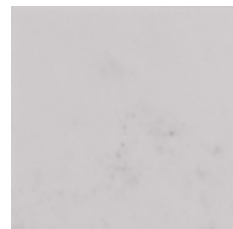
Meteorite G1-903  
OP15028AR



Wheat G1-902  
OP15030AR



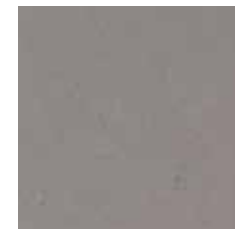
Tigerskin White G1-904  
OP15029AR



Tempest Carrara Q-1007  
OP15032AR



Carrara Verta Q-3009  
OP15031AR

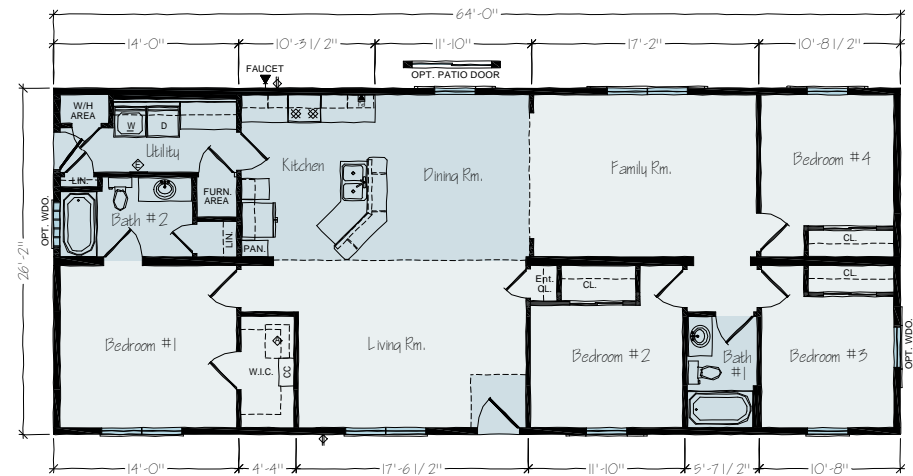


Terra Grey Q-3012  
OP15033AR



**DESKS & ISLANDS**

Kitchen islands have become a real icon of the modern kitchen. Our kitchen islands come in a variety of shapes and sizes, and have the ability to be interchanged with a similar sized island to the one on the original plan.





## **STANDARD DESK**



**Desk A** Kitchen Unit  
OP16000AR



**Desk B** 60" Hall Unit  
OP16001AR



**Desk C** 57"x57" Corner Unit  
OP16002AR



**Desk D** 81" Office Unit  
OP16003AR



**Desk E** 135" Office Unit  
OP16004AR

## ISLANDS



**Island A**  
4'3"x2'3" Island with 1"  
overhang all sides and  
receptacle on one end.  
**OP16005AR**



**Island B**  
4'3"x3' Island with 1"  
overhang on front and  
sides and 11" overhang on  
backside and receptacle  
on one end.  
**OP16006AR**



**Island J**  
6'9"x3'6 1/2" Island with  
1" overhang on front and  
one side, raised bar with  
13" overhang on back with  
leg supports, 24"x42" shelf  
section on side, receptacle  
on one end.  
**OP16011AR**



**Island I**  
6'4"x3'3" Island with over-  
hang, kneehole on back-  
side, glass doors square on  
one end and solid doors  
on opposite end, fluted  
legs at each corner and  
receptacle on backside of  
solid door cabinet.  
**OP16010AR**



**Island E**  
Angled Island with 1" overhang on front  
and sides, 11" overhang on backside with  
receptacle on one end **OP16007AR**



**Island F**  
Angled Island with 1"  
overhang on front and  
sides, raised bar with 13"  
overhang on backside,  
receptacle on one end.  
**OP16008AR**  
Stone Backing **OP16009AR**





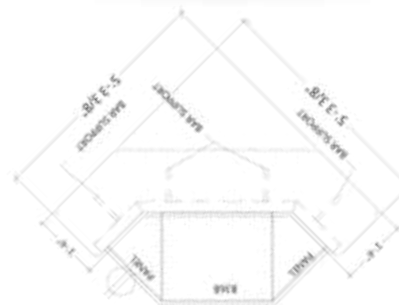
### Island K

Double angle island with 1" overhang on front and sides, raised bar with 13" overhang on backside, receptacle on both ends. (Shown with sink, will accommodate dishwasher)  
**OP16012AR**  
**OP16013AR** (stone backing)



### Island L

Double angle Island with 1" overhang on front and sides, raised bar with 13" overhang on back with supports, receptacle on one end.  
**OP16014AR**



### Island N

4'6" x 3'1" Island with 11" overhang on back, full leg supports each end and receptacle on one end.  
**OP16015AR**



### Island S

6'5" x 3'5" Island with overhang on back, (2) pots and pans drawers, and (2) straight legs. Receptacle on one end  
**OP16019AR**







**Island T**  
9'4"x4'2"  
(2) large pots and pans  
drawers, and (2) straight  
legs  
**OP16020AR**



**Island Q**  
8'4"x3'5" island with  
overhang on back,  
bookshelf on side.  
**OP16017AR**



**Island P**  
6'4"x3'5" island with  
overhang on back, (2) 4  
bank of drawers. 39"  
cabinet on side.  
**OP16016AR**



**Island R**  
5'4"x3'5" island with  
overhang on back, 2  
drawer pots and pans. 39"  
cabinet on side.  
**OP16018AR**





## INTERIOR DOORS & TRIM



**6 PANEL DOOR**



**3 PANEL DOOR**



**2 PANEL DOOR**

## TRIM PACKAGES

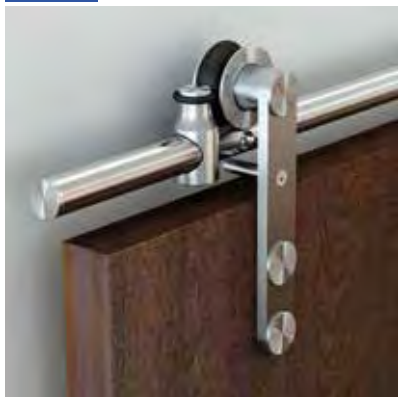
**OP17017AR-STANDARD PACKAGE** - Any door style in hollow core only, Trim Style 1, white only

**OP17025R-PACKAGE A** - Any door style in solid core, Trim Style 1, white or coffee

**OP17026R-PACKAGE B** - Any door style in solid core, Trim Style 2, white only, mitered installation

**OP17027R-PACKAGE C** - Alder 3 Panel Door; Flat Sappy Cherry 3" casing, 4" base trim, butted installation.

## BARN DOOR HARDWARE



Brushed Nickel or Oil Rubbed Bronze barn door hardware on door to match

**OP17001AR**

Optional Pocket Doors (without privacy lockset)

**OP17013AR**

Optional Pocket Doors (with privacy lockset)

**OP17014AR**

## TRIM COLOR



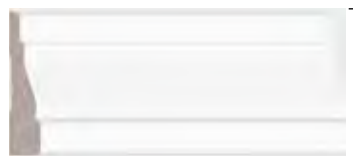
**WHITE**



**COFFEE**

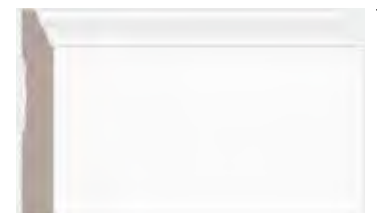
## TRIM STYLE

### STYLE 1



2 1/4"

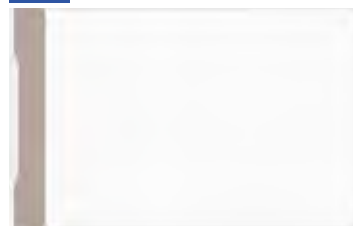
**CASING**



3 1/4"

**BASEBOARD**

### STYLE 2



3 1/4"

**CASING**



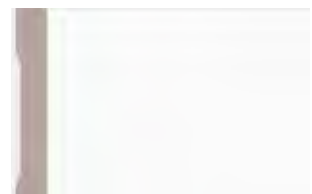
4 1/4"

**BASEBOARD**

## PACKAGE C

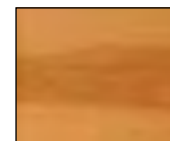


**ALDER DOOR**

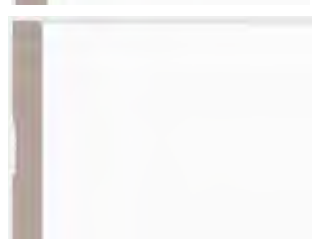


**CASING**

3"



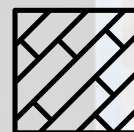
**SAPPY CHERRY TRIM**



**BASEBOARD**

4"





**FLOORING**

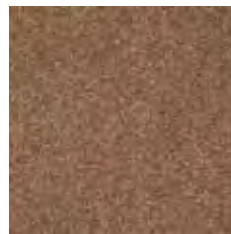
## ADVANTAGE SERIES CARPET

### Livewire II Carpet

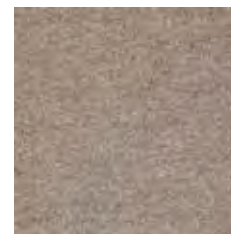
- Nylon fibers and Polypropylene backing
- Treated with Shaw R2X Soil and Stain Resistance  
*Long-Term Protection Against Most Household Stains*  
*Preserves and Protects Carpet's Appearance*  
*Reduces Static Buildup*
- Recyclable
- Resilient
- 13 oz. Carpet



Suede  
**OP18018A**

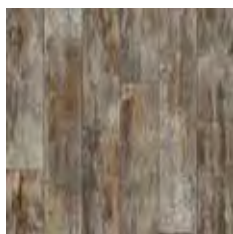


Brownwood  
**OP18016A**

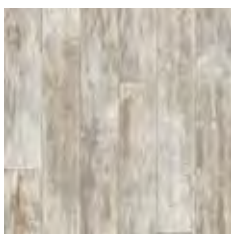


Rockslide  
**OP18017A**

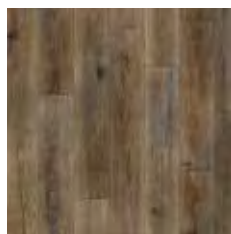
## STANDARD VINYL FLOORING



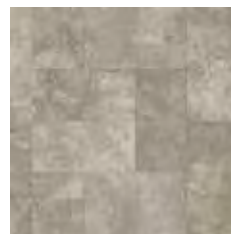
Barn Wood Greige  
LX277 **OP18021AR**



Barn Wood Vintage White  
LX275 **OP18022AR**



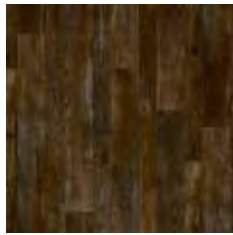
Aged European Oak Farmstead  
LX310 **OP18019AR**



Meteor Hillsborough  
Beige LX300 **OP18023AR**



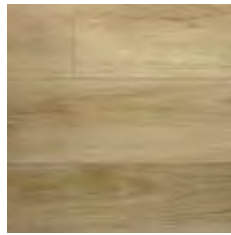
Rockport Greyhound  
LX285 **OP18024AR**



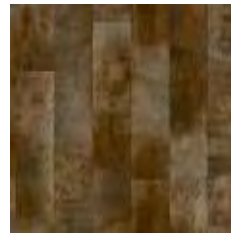
Saddle Ridge Weatherwood  
LX295 **OP18026AR**



Vintage Plank Cafe Au Lait  
LX290 **OP18020AR**



European Oak Aspen  
LX327 **OP18027AR**



Boulder Eldorado Canyon  
LX245 **OP18025AR**



Westport Harbor Light  
LX330 **OP18028AR**

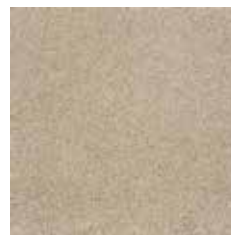
## ROCHESTER SERIES GO SOFTLY CARPET <sup>35 OZ.</sup>



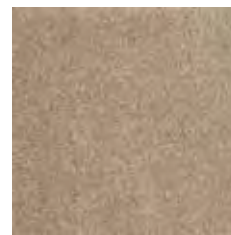
Iced Coffee  
**OP18029AR**



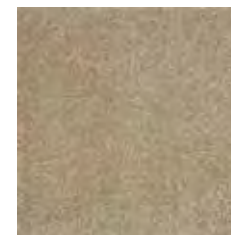
Kodiak Bear  
**OP18030AR**



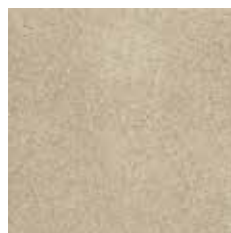
Natural Wood  
**OP18031AR**



Pueblo  
**OP18032AR**



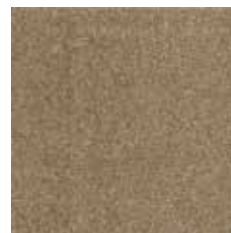
River Bank  
**OP18033AR**



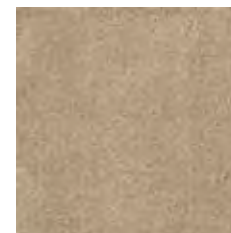
Travertine  
**OP18034AR**



Warm Oatmeal  
**OP18036AR**



Twig  
**OP18035AR**



Wheat  
**OP18037AR**

## ROCHESTER SERIES BLENDING UPWARDS CARPET <sup>42 OZ.</sup>



Coastline  
**OP18038AR**



Fog  
**OP18039AR**



Mushroom  
**OP18040AR**



Pleasant Valley  
**OP18041AR**



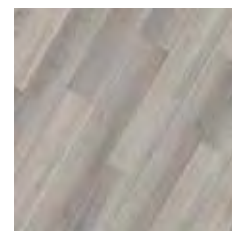
Tree Swing  
**OP18043AR**



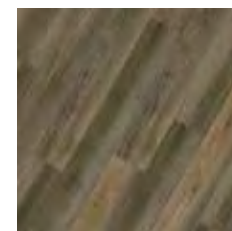
Smoked Pearl  
**OP18042AR**



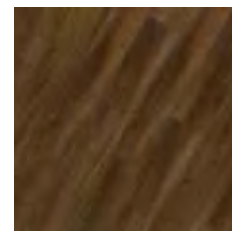
## ENCORE PLANK FLOORING - 7.08" X 48.03



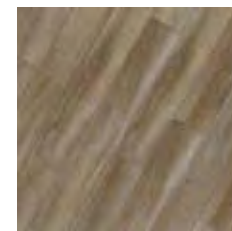
Mitchell LUM-464  
**OP18047R**



Mayville LUM-465  
**OP18046R**



Crosby LUM-466  
**OP18044R**

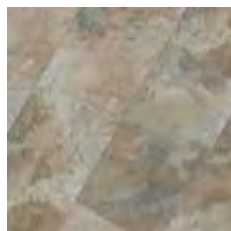


Mapleton LUM-467  
**OP18045R**

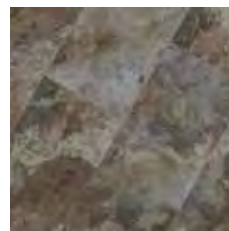
## ENCORE TILE FLOORING - 12" X 24"



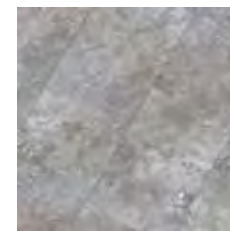
Almont LUM-468  
**OP18048R**



Ross LUM-469  
**OP18049R**



Sharon LUM-470  
**OP18050R**



Verona LUM-471  
**OP18051R**



**INTERIOR FINISH**



## BLINDS AND COLUMNS



Blinds 2" faux white wood available on vinyl windows; excludes picture and transom  
**OP19017AR**



Fluted wood column to match trim per pair  
**OP19007AR**



Grand Archway 5' arch with fluted columns, wood capped 1/4 walls  
**OP19001AR**

## INTERIOR FINISHES



Closet Organizer Component Additional. White Only  
**OP19014AR**  
\*standard in Master Walk-in Closet



Interior lever handle.  
Brushed Nickel (Standard) **OP19013AR**  
Rustic Bronze (Optional) **OP19016AR**

## DRYWALL OPTIONS



Drywall arch  
4' **OP19008AR**  
5' **OP19009AR**

Large opening drywall arch  
**OP19010AR**



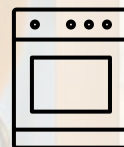
Coffered Ceiling with white crown moulding  
**OP19002AR**



Tray Ceiling with 4 recessed can lights  
**OP19011AR**







**APPLIANCES**

# HOMEOWNER SAMSUNG PRO-

Purchase through Rochester Homes for the best support service, and receive the following exclusive benefits

- 1 full year parts and labor plus 30 day cosmetic warranty on all products
- Dedicated Samsung Builder Service Support Team
- 3 year Warranty Program for Samsung packages that include refrigerator and laundry pair

# SAMSUNG

## PACKAGE A - STAINLESS OP20000AR



Samsung 21 Cu. Ft. Top Mount  
[OP20005AR](#)

Samsung Dishwasher  
[OP20001AR](#)



Samsung Electric Range  
[OP20002AR](#)



## OPTIONAL GAS RANGE IPO ELECTRIC RANGE



Samsung Gas Range  
[OP20003AR](#)

Note: Fridge dimensions are 32 7/8" W x 67 3/4" H x 31 7/8" D and will not fill most fridge openings

## **PACKAGE B - STAINLESS OP20006AR**



Samsung Side by Side Refrigerator  
**OP20007AR**

- 27.5 Cu. Ft.
- LED Lighting
- 4 Tempered Glass Shelves
- In-Door Ice Maker
- External Water/Ice Dispenser



Samsung OTR Microwave  
**OP20008AR**

- 1.6 Cu. Ft. Oven Capacity
- LED Display
- 300 CFM Ventilation System
- Turntable On/Off

Samsung Dishwasher  
**OP20001AR**

- Quiet Operation – 55 dba
- Digital Leak Sensor
- Stainless Steel Interior Door/ polymer tub
- Nylon Racks
- Adjustable Upper Rack
- Top Controls



Samsung Electric Range  
**OP20002AR**

- 5.9 Cu. Ft. Capacity Oven
- Hidden Bake Element
- Self Clean
- Wide View Window
- 5 Elements. 2 Dual. One Warming Center

## **OPTIONAL GAS RANGE IPO ELECTRIC RANGE**



Samsung Stainless Gas Range  
**OP20003AR**

- 5.8 Cu. Ft. Oven Capacity
- Hidden Bake Element
- 5 Burner Flexible Cooktop
- 17K BTU Power Burner
- Manual Clean Oven



## **PACKAGE C - STAINLESS OP20009AR**



Samsung French Door Refrigerator  
**OP20013AR**

- 27 Cu. Ft.
- Digital Inverter Compressor
- High Efficiency LED Lighting
- Twin Cooling – 2 Evaporators
- Ice Master makes 10 lbs. of ice per day
- Cool Select Pantry Temperature Controlled
- Filtered Water



Samsung OTR Microwave  
**OP20008AR**

- 1.6 Cu. Ft. Oven Capacity
- LED Display
- 300 CFM Ventilation System
- Turntable On/Off

Samsung Dishwasher  
**OP20010AR**

- Full Stainless Interior
- Digital Leak Sensor
- Quiet Wash 51 dba
- Front Controls with Pocket Handle
- Adjustable Nylon Racks
- Hidden Heat element



Samsung Electric Range  
**OP20011AR**

- 5.9 Cu. Ft. Capacity Oven
- Hidden Bake Element
- 5 Elements. 2 Dual. One Warming Center
- Stainless Steel Cooktop and Die Cast Knobs
- Convection Oven

## **OPTIONAL GAS RANGE IPO ELECTRIC RANGE**



Samsung Stainless Gas Range  
**OP20012AR**

- 5.8 Cu. Ft. Oven Capacity
- Fan Convection Self Clean Oven
- Hidden Bake Element
- 5 Burner Flexible Cooktop
- 17K BTU Power Burner
- Comes with Griddle

## **PACKAGE D - STAINLESS OP20014AR**



Samsung 4 Door French Door  
**OP20019AR**

- 28 Cu. Ft.
- Flex Zone Drawer – 4 Temp., Kid Height
- Twin Cooling Plus – 2 Evaporators
- LED Lighting
- Digital Inverter Compressor
- Ice Master makes up to 10 lbs. per day



Samsung OTR Microwave  
**OP20016AR**

- 1.9 Cu. Ft. Oven Capacity
- Ceramic Enamel Interior
- LED Display
- 400 CFM Ventilation System
- Simple Clean Filter

Samsung Dishwasher  
**OP20015AR**

- Stainless Interior
- Digital Leak Sensor
- Quiet Wash 48 dba
- Hidden Heating Element
- Adjustable Nylon Racks
- Auto Release Door Dry



Samsung Electric Range  
**OP20017AR**

- Flex Duo with Dual Door
- Dual Fan Convection & Air Fryer
- 6.3 Cu. Ft. Oven Capacity
- 5 Elements – 2 Dual for Flexibility
- Wi-Fi Connectivity Remote Control

## **OPTIONAL GAS RANGE IPO ELECTRIC RANGE**



Samsung Stainless Gas Range  
**OP20018AR**

- Flex Duo with Dual Door
- Dual Fan Convection Self Clean Oven
- 6 Cu. Ft. Oven Capacity
- 5 Elements – 2 Dual for Flexibility
- Wi-Fi Connectivity Remote
- Control/Monitor from your smart phone
- Air Fryer

## **PACKAGE D - BLACK STAINLESS OP20020AR**



Samsung 4 Door French Door  
**OP20025AR**

- 28 Cu. Ft.
- Flex Zone Drawer – 4 Temp., Kid Height
- Twin Cooling Plus – 2 Evaporators
- LED Lighting
- Digital Inverter Compressor
- Ice Master makes up to 10 lbs. per day



Samsung OTR Microwave  
**OP20022AR**

- 1.9 Cu. Ft. Oven Capacity
- Ceramic Enamel Interior
- LED Display
- 400 CFM Ventilation System
- Simple Clean Filter

Samsung Dishwasher  
**OP20021AR**

- Stainless Interior
- Digital Leak Sensor
- Quiet Wash 48 dba
- Hidden Heating Element
- Adjustable Nylon Racks
- Auto Release Door Dry



Samsung Electric Range  
**OP20023AR**

- Flex Duo with Dual Door
- Dual Fan Convection & Air Fryer
- 6.3 Cu. Ft. Oven Capacity
- 5 Elements – 2 Dual for Flexibility
- Wi-Fi Connectivity Remote Control

## **OPTIONAL GAS RANGE IPO ELECTRIC RANGE**



Samsung Stainless Gas Range  
**OP20024AR**

- Flex Duo with Dual Door
- Dual Fan Convection Self Clean Oven
- 6 Cu. Ft. Oven Capacity
- 5 Elements – 2 Dual for Flexibility
- Wi-Fi Connectivity Remote
- Control/Monitor from your smart phone
- Air Fryer



## PACKAGE E - STAINLESS OP20026AR



Samsung 4 Door Flex  
**OP20029AR**

- 28.1Cu. Ft.
- Flex Zone - Bottom right can be freezer or refrigerator
- Largest fresh food capacity
- Makes up to 5 lbs of Ice per day
- Triple Cooling - 3 Evaporators
- LED Lighting



Samsung OTR Microwave  
**OP20016AR**

- 1.8 Cu. Ft. Oven Capacity
- Ceramic Enamel Interior
- LED Display
- 400 CFM Ventilation System
- Simple Clean Filter

Samsung Dishwasher  
**OP20015AR**

- Stainless Interior
- Digital Leak Sensor
- Quiet Wash 48 dba
- Hidden Heating Element
- Adjustable Nylon Racks
- Storm Wash
- Auto Release Door Dry



Samsung Double Wall Oven  
**OP20027AR**

- Duel True Convection
- Two 5.1 Cu. Ft. Ovens
- WIFI Connectivity
- Hybrid Clean - Self Clean plus Steam
- Only Available in Electric



Samsung 30" Gas Cooktop  
**OP20002AR**

- WIFI Connectivity
- 19K BTU dual Burner
- 5 Burners
- Available in Electric - **OP20036AR**

## OPTIONAL MICRO/OVEN IPO WALL OVEN & OTR MICRO



Samsung Microwave Oven Combo  
**OP20087AR**

- 5.1 Cu. Ft. Oven/ 1.9 Cu. Ft. Microwave
- Ceramic Enamel Interior
- Convection Microwave
- Steam Cook Oven for Professional Results
- Duel Fan Convection Oven
- WIFI Connectivity
- Self Clean plus Steam
- Only available in Electric

## PACKAGE E - STAINLESS OP20030AR



Samsung 4 Door Flex  
**OP20033AR**

- 28.1 Cu. Ft.
- Flex Zone - Bottom right can be freezer or refrigerator
- Largest fresh food capacity
- Makes up to 5 lbs of Ice per day
- Triple Cooling - 3 Evaporators
- LED Lighting



Samsung OTR Microwave  
**OP20022AR**

- 1.9 Cu. Ft. Oven Capacity
- Ceramic Enamel Interior
- LED Display
- 400 CFM Ventilation System
- Simple Clean Filter

Samsung Dishwasher  
**OP20032AR**

- Stainless Interior
- Digital Leak Sensor
- Quiet Wash 48 dba
- Hidden Heating Element
- Adjustable Nylon Racks
- Storm Wash
- Auto Release Door Dry



Samsung Double Wall Oven  
**OP20031AR**

- Duel True Convection
- Two 5.1 Cu. Ft. Ovens
- WIFI Connectivity
- Hybrid Clean - Self Clean plus Steam
- Only Available in Electric



Samsung 30" Gas Cooktop  
**OP20035AR**

- WIFI Connectivity
- 19K BTU dual Burner
- 5 Burners
- Available in Electric - **OP20036AR**

## OPTIONAL MICRO/OVEN IPO WALL OVEN & OTR MICRO



Samsung Microwave Oven Combo  
**OP20085AR**

- 5.1 Cu. Ft. Oven/ 1.9 Cu. Ft. Microwave
- Ceramic Enamel Interior
- Convection Microwave
- Steam Cook Oven for Professional Results
- Duel Fan Convection Oven
- WIFI Connectivity
- Self Clean plus Steam
- Only available in Electric

## REFRIGERATOR OPTIONS



### Samsung French Door

- 27 Cu. Ft.
- Digital Inverter Compressor
- High Efficiency LED Lighting
- Twin Cooling - 2 Evaporators
- Ice Master - 10lbs of Ice Per Day
- Cool Select Pantry
- Filtered Water
- Stainless - **OP20013AR**
- Black Stainless - **OP20049AR**



### Samsung Side by Side

- 27.4 Cu. Ft.
- LED Lighting
- 4 Tempered Glass Shelves
- In-Door Ice Maker
- External Water/ Ice Dispenser
- Stainless - **OP20043AR**
- Black Stainless - **OP20042AR**



### Samsung 4 Door Flex

- Flex Zone - Bottom right can be freezer or refrigerator
- Largest fresh food capacity
- Makes up to 8.6 lbs of Ice per day
- Triple Cooling - 3 Evaporators
- LED Lighting
- Stainless - **OP20040AR**
- Black Stainless - **OP20050AR**

### Counter Depth Options Available

- Stainless - **OP20045AR**
- Black Stainless - **OP20044AR**





## FAMILY HUB REFRIGERATOR

REPLACE WITH A FAMILY HUB REFRIGERATOR TO ANY PACKAGE -



### Samsung Family HUB French Door

- 26.5 Cu. Ft.
- WIFI Connectivity Family HUB
- Voice Activation
- See Inside from anywhere
- Control from you smart phone
- Twin Cooling Plus - 2 evaporators
- Cool Select Pantry
- Stainless - **OP20056AR**
- Black Stainless - **OP20055AR**



### Samsung Family HUB 4 Door Flex

- 27.9 Cu. Ft.
- WIFI Connectivity Family HUB
- Voice Activation
- See Inside from anywhere
- Control from you smart phone
- Flex Zone - Bottom right can be freezer or refrigerator
- Largest fresh food capacity
- Triple Cooling - 3 Evaporators
- Stainless - **OP20058AR**
- Black Stainless - **OP20057AR**

### Counter Depth Options Available

- Stainless - **OP20052AR**
- Black Stainless - **OP20046AR**



### Samsung Family HUB 4 Door French Door

- 27.4 Cu. Ft.
- Flex Zone Drawer - Kid Height
- WIFI Connectivity Family HUB
- Voice Activation
- See inside from anywhere
- Control from you smart phone
- Twin Cooling Plus - 2 evaporators
- Stainless - **OP20041AR**
- Black Stainless - **OP20059AR**

### Counter Depth Options Available

- Stainless - **OP20054AR**
- Black Stainless - **OP20053AR**



### Samsung Family HUB Side by Side

- 26.7.4 Cu. Ft.
- WIFI Connectivity Family HUB
- Voice Activation
- See inside from anywhere
- Control from you smart phone
- LED Lighting
- 25W Speaker
- Stainless - **OP20061AR**
- Black Stainless - **OP20060AR**



#### Samsung Under Cabinet Hood

- 390/600 CFM
- Baffle Filters
- LED Lighting
- Stainless - [OP20039AR](#)
- Black Stainless - [OP20039AR](#)

#### Samsung 30" Electric Cooktop

- 5 Burners - Two Dual
- Rapid Boil Element 3,300 KW
- WIFI Connectivity
- Stainless - [OP20036AR](#)
- Black Stainless - [OP20035AR](#)



#### Package A Samsung Top Load Washer/Dryer Electric White [OP20062AR/ OP20063AR](#)

- 4.0 Cu Ft. Washer
- 7.2 Cu. Ft. Dryer
- Self Clean Washer
- VRT Vibration Reduction Technology
- Diamond Drum
- Sensor Dry Dryer



#### Package B Samsung Top Load Washer/Dryer Electric White [OP20064AR/ OP20065AR](#)

- 5.0 Cu Ft. Washer
- 7.4 Cu. Ft. Dryer
- Self Clean Washer
- VRT Vibration Reduction Technology
- Sensor Dry Dryer



#### Package C Samsung Front Load Washer/Dryer Electric White [OP20066AR/ OP20067AR](#)

- 4.2 Cu Ft. Washer
- 7.5 Cu. Ft. Dryer
- Self Clean Washer
- VRT Vibration Reduction Technology
- Smart Care
- Sensor Dry Dryer

## LAUNDRY OPTIONS



**OP20083AR**- White Pedestal Drawer

**OP20079AR**- Stack Kit-Skk-8A

**OP20082AR**- Black Stainless Pedestal Drawer

**OP20078AR**- Smart Adapter



Package D Samsung Front Load Washer/Dryer Electric White

**OP20068AR/ OP20069AR**

- 4.5 Cu Ft. Washer
- 7.5 Cu. Ft. Dryer
- Self Clean Washer
- VRT Vibration Reduction Technology
- Stackable
- Sensor Dry Dryer

Package F Samsung Front Load Washer/Dryer Electric White

**OP20074AR/ OP20075AR**

Black Stainless

**OP20076AR/ OP20077AR**

- 4.5 Cu Ft. Washer
- 7.5 Cu. Ft. Dryer
- WIFI Connected and Smart Care
- Super Speed 36 min wash
- Steam Wash & Dry
- Sensor Dry Dryer
- VRT PLUS SENSOR Vibration Reduction System







dream it. build it. love it.



## Chillicothe Model Center

6473 US Route 23

Chillicothe, Ohio 45601

**740-663-4800**

## Jackson Model Center

91 State Route 327

Jackson, Ohio 45640

**740-288-9995**



## Henderson Model Center

6167 Kanawha Valley Road

Henderson, WV 25106

**304-675-4424**



[www.dw-homes.com](http://www.dw-homes.com)